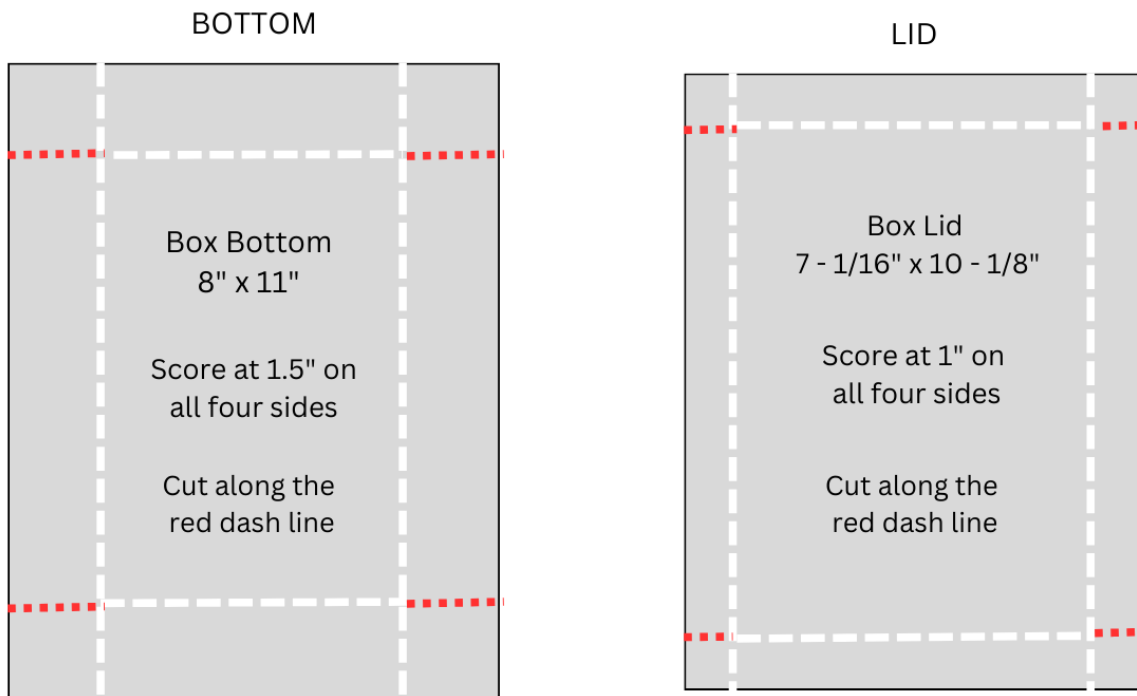


CARD CONCEPT SHEET (CCS) #7

Gift Box w/Lid Fits the Flip Calendar Stand



Assembly Instructions:

For the Bottom of your box:

- Cut your cardstock to 8" x 11
- Score each side of the card stock to 1.5"
- Make cuts where the red-dashed score lines are shown above
- Fold and burnish all score lines
- Use adhesive on each of the corner flaps and fold inward and glue it to the adjacent side which will create the corner.

For the Lid of your box:

- Cut your cardstock to 7 1/8" x 10 1/8"
- Score each side of the card stock to 1"
- Make cuts where the red-dashed score lines are shown above
- Fold and burnish all score lines
- Use adhesive on each of the corner flaps and fold inward and glue it to the adjacent side which will create the corner.